

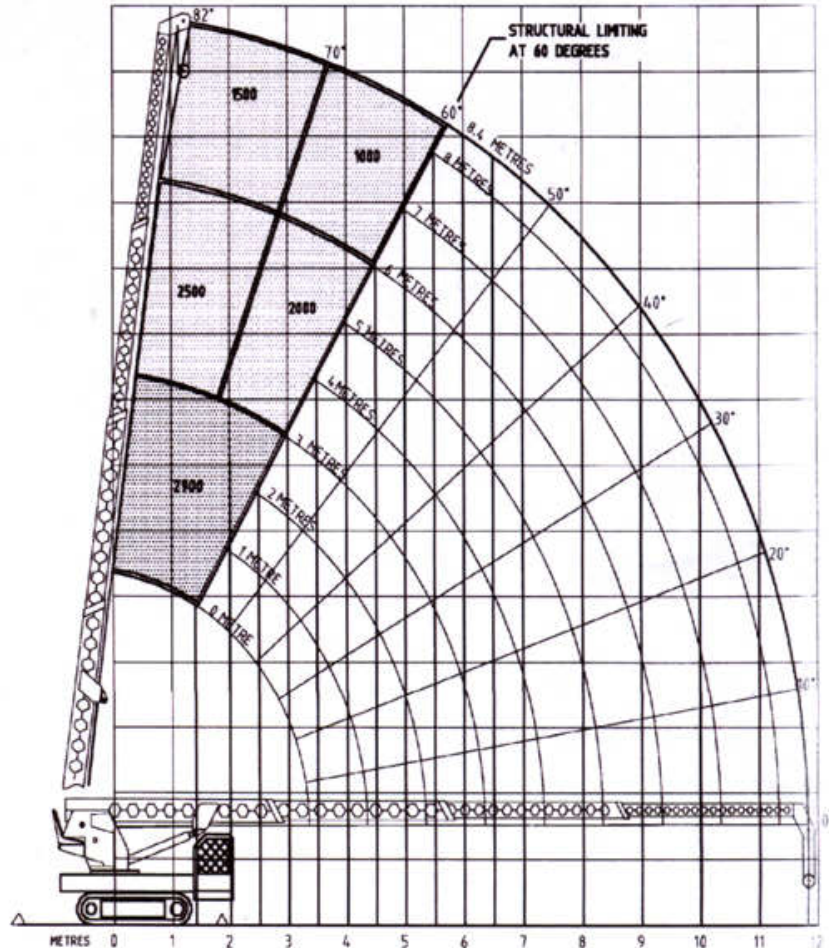
# QLD MINI CRANES

# LINMAC LCC45

# QMC003, QMC004, & QMC005

CRANE					
Capacity	4500kg at 2.0 metres				
Max. Operating radius:	Power booms only 11.75 metres				
	Fly boom attached 14.95 metres				
Max. lift Height	Power booms only 13.00 metres				
	Fly boom attached 16.20 metres				
WINCH					
Lifting rope	12mm x 84 metres				
Lifting system	Danfoss/Reggiana MLF087 OMSS315 drive motor including integral brake & dual over centre valve				
Lifting speed	FALLS	1	2	3	4
	CAPACITY	150 0kg	2900kg	440 0kg	4500kg
	SPEED	35m /min	17m/min	12m /min	9m/min
DIMENSIONS					
Length	4.6 metres				
Width	1.4 metres				
Height (boom Horizontal)	1.9 metres				
Weight (base Machine)	4400kg divisible				
Counterweight	600kg				
BOOM					
Retracted length	3.35 metres				
Extended length	Power booms only 11.75 metres				
	Fly boom attached 14.95 metres				
Steps	Power booms Four-part, rectangular Fly boom Lattice fly boom, fifth-part				
Extension	Hydraulic proportional extension, parts 2, 3, & 4 manual swing-out, part 5				
Telescopic stroke	3 X 2803mm				
Time to extend	5 seconds				
LUFFING					
Device	Double acting hydraulic cylinder				
Range of angles	0 - 82°				
Luffing time (0-82°)	9 seconds				
SLEWING					
Device	Hydraulic motor, with integral brake & over centre valve				
Range	360° continuous in either direction				
Speed	4 revolutions per minute				
OUTRIGGERS					
Type	Four hydraulic cylinders				
Set-up system	Manually swing from stowed position, pinned in place Hydraulic lowering				
SAFETY DEVICES					
Overload indicator	Load cell with gauge				
Overload indicator	Mechanical boom angle indicator				
Overload alarm	Buzzer				
Hydraulics	Pressure relief valve				
Winch	Over centre valve				
Boom luffing	Over centre valve				
Boom extension	Over centre valve				
Slew	Over centre valve				
Outriggers	Pilot check valve				
ENGINE					
Model	Kubota water-cooled diesel				
Output	21.6kw @ 3000 rpm				
TRAVELLING					
Ascending angle	30°				
Slow speed	2.25km/h, forward/reverse				
Fast speed	4.5km/h, forward/reverse				
Drive	Two x danfoss/reggiana hydraulic drive motor, one per track				
Braking angle	30°				
Turing	Independent left & right track controls, forward/reverse				
TRACKS					
Model	Bridgestone rubber crawler				
Width	320mm				
Ground length	1650mm				
Ground pressure	0.28kg/cm <sup>2</sup>				
HYDRAULICS					
Pump	Commercial single gear pump				
Relief valve setting	195kg/cm <sup>2</sup>				

5% OF TIPPING WITH OUTRIGGERS SET



POWER BOOM CAPACITIES kg WITHOUT COUNTERWEIGHT	4.5	5	7	9	11	12.5	14.95
4500	3700	3000	2300	2200	2000	1600	1200
3000	2300	1800	1500	1250	1100	1000	800
2000	1600	1250	1100	1000	800	640	460
1600	1250	1100	1000	800	640	460	380
1200	1000	800	640	460	380	330	310

POWER BOOM CAPACITY kg COUNTERWEIGHT = 600 kg	4.5	5	7	9	11	12.5	14.95
4500	3700	3000	2300	2200	2000	1800	1500
3000	2300	1800	1500	1250	1100	1000	800
2000	1600	1250	1100	1000	800	600	500
1600	1250	1100	1000	800	600	500	450
1200	1000	800	600	500	450	400	400

FLY BOOM OPERATIONAL RADIUS	4.5	5	7	9	11	12.5	14.95
RATED LOAD kg	600	500	375	250	200	200	165

## LIFT & CARRY CAPACITIES

MAXIMUM LIFT AND TRAVEL LOAD  
1200 kg at 60°  
CAPACITIES RATED AT 5% OF TIPPING.  
IMPORTANT NOTES:  
ALL BOOMS MUST BE RETRACTED  
60° IS MAXIMUM LIFT ANGLE  
NO LIFTING OVER SIDE OF MACHINE  
WITHOUT USING OUTRIGGERS

ANGLE	MAX WEIGHT
0°	800 kg
10°	820 kg
20°	870 kg
30°	940 kg
40°	1000 kg
50°	1100 kg
60°	1200 kg

